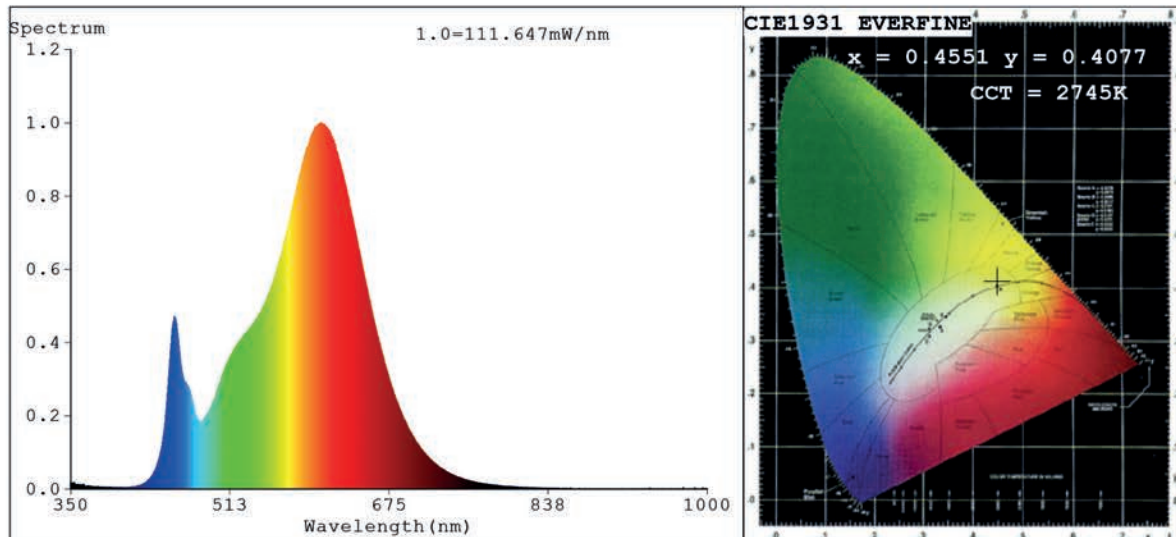


Spectrum Test Report



Color Parameters:

Chromaticity Coordinate: $x=0.4551$ $y=0.4077$ $u'=0.2607$ $v'=0.5255$
 CCT=2745K (Duv=-0.0007) Dominant WL: $\lambda_d = 584.2\text{nm}$ Purity=59.0%
 Ratio: R=25.0% G=72.5% B=2.5%; Peak WL: $\lambda_p = 606.2\text{nm}$ FWHM=109.6nm
 Render Index: Ra=82.4 CRI=77.8 TM30: Rf=82 Rg=95 Lav=594.1nm
 R1 =82 R2 =94 R3 =92 R4 =79 R5 =83 R6 =94 R7 =80
 R8 =56 R9 =6 R10=87 R11=80 R12=76 R13=85 R14=97 R15=73

Photo Parameters:

Flux = 5026 lm Eff. : 168.57 lm/W $\Phi_e = 15.42\text{ W}$

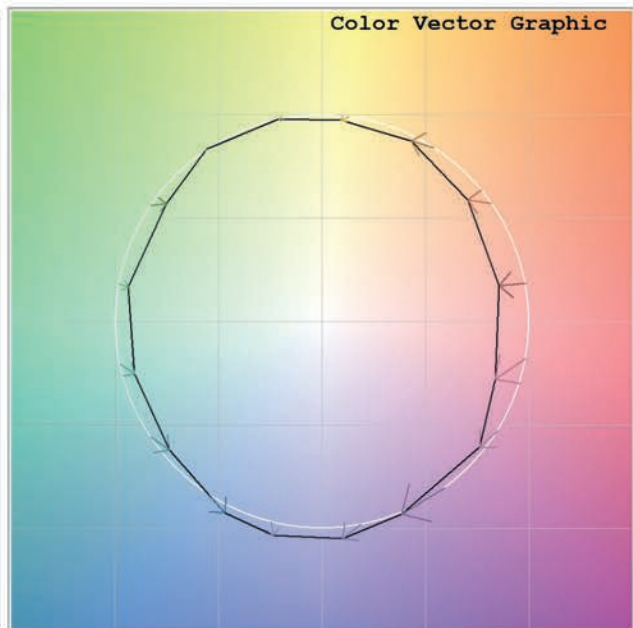
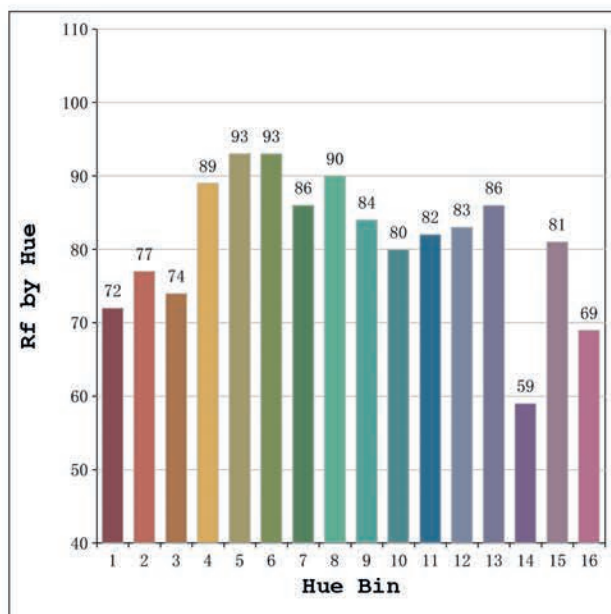
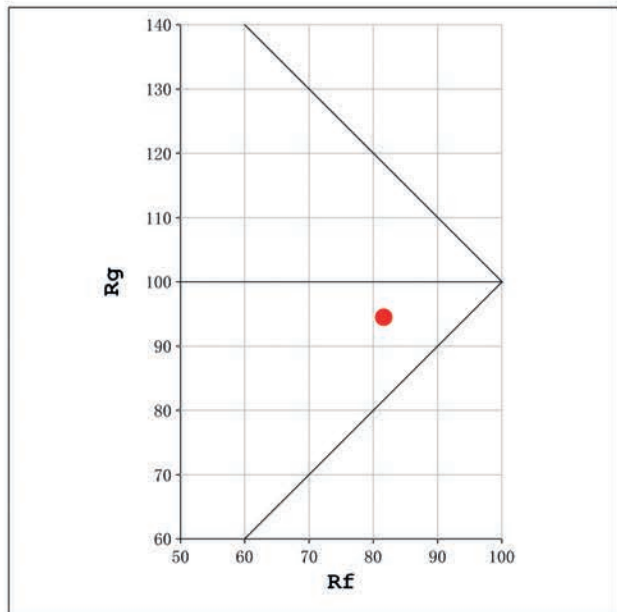
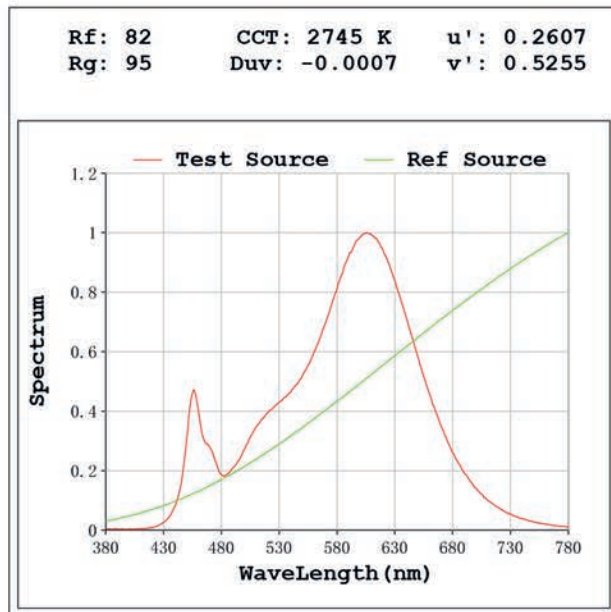
Electrical parameters:

V = 23.998 V I = 1.242 A P = 29.82 W PF = 1.000

Status: Integral T = 250 ms $I_p = 50134$ (77%)

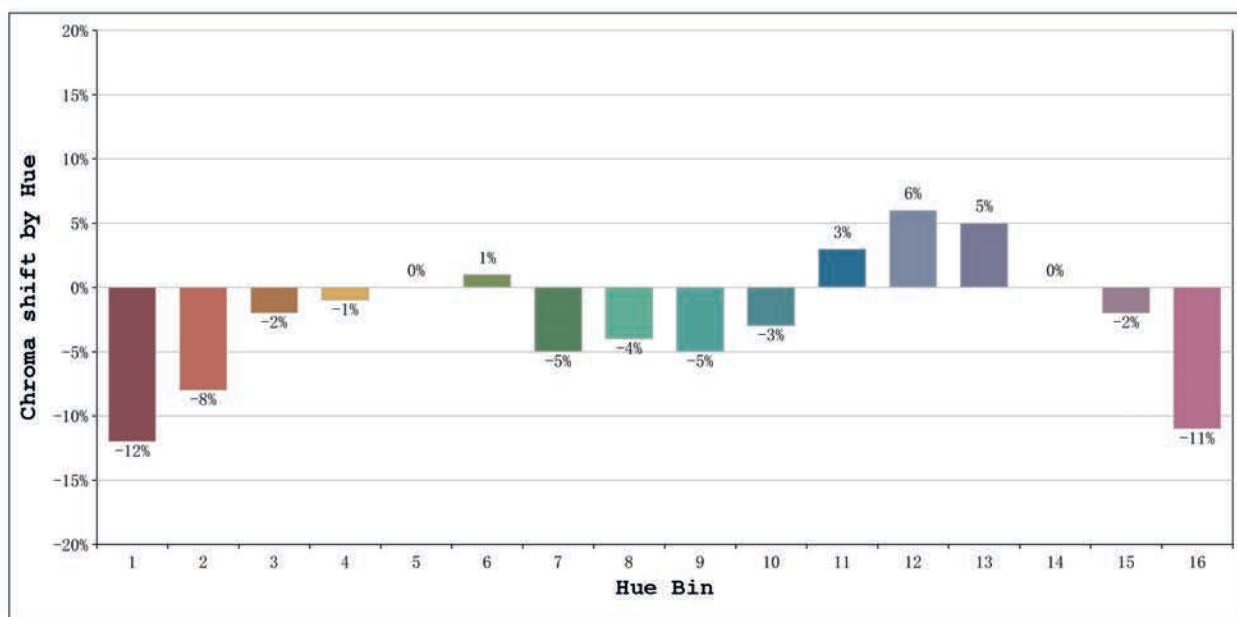
Model: Córdoba High Efficiency
 Tester: Sergio Carneros
 Temperature: 27Deg
 Manufacturer: Luz Negra S.L.

Number: 33.207
 Date: 2024-11-21 08:20:30
 Humidity: 35%
 Remarks: 100cm de tira flexible



Model: Córdoba High Efficiency
 Tester: Sergio Carneros
 Temperature: 27Deg
 Manufacturer: Luz Negra S.L.

Number: 33.207
 Date: 2024-11-21 08:20:30
 Humidity: 35%
 Remarks: 100cm de tira flexible



			Graphic shift(%)	
Hue Bin	Hue Angle	Rf	Chroma	Hue
1	0.0° - 22.5°	72	-12	2
2	22.5° - 45.0°	77	-8	8
3	45.0° - 67.5°	74	-2	11
4	67.5° - 90.0°	89	-1	4
5	90.0° - 112.5°	93	0	3
6	112.5° - 135.0°	93	1	0
7	135.0° - 157.5°	86	-5	-4
8	157.5° - 180.0°	90	-4	1
9	180.0° - 202.5°	84	-5	6
10	202.5° - 225.0°	80	-3	10
11	225.0° - 247.5°	82	3	11
12	247.5° - 270.0°	83	6	3
13	270.0° - 292.5°	86	5	-9
14	292.5° - 315.0°	59	0	-23
15	315.0° - 337.5°	81	-2	-10
16	337.5° - 360.0°	69	-11	-11

Model:Córdoba High Efficiency
Tester:Sergio Carneros
Temperature:27Deg
Manufacturer:Luz Negra S.L.

Number: 33.207
Date:2024-11-21 08:20:30
Humidity:35%
Remarks:100cm de tira flexible